

# PLUGS

series  
**PLG**

Protection	Gas	1-2	II2G	Ex d IIC Gb / Ex e IIC Gb
	Dusts	21-22	II2D	Ex tb IIIC Db

Degree of Protection	IP66
----------------------	------

Amb. Temp.	Standard	Extended	-40°C	+100°C
			-60°C	+180°C



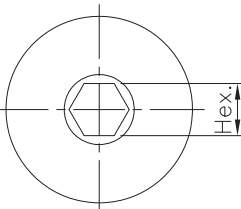
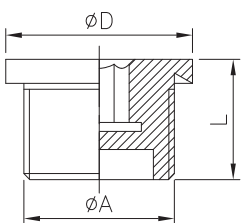
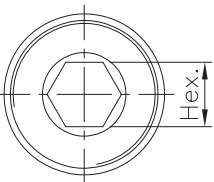
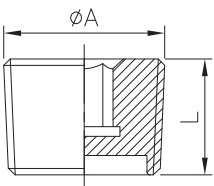
Entries Threading	NPT ANSI B1.20 or Metric ISO 262
-------------------	----------------------------------

Material	Nickel plated Brass
----------	---------------------

Standards and Certificates	Directive 2014/34/EU (ATEX)
	EN 60079 - 0 • EN 60079 - 1 EN 60079 - 7 • EN 60079 - 31
CE	INERIS 14 ATEX 0029X
IECEx	IEC 60079 - 0 • IEC 60079 - 1 IEC 60079 - 7 • IEC 60079 - 31
	IECEx INE 14.0038X

- Plugs series PLG are used to close the unused entries. Hexagon cavity on the head ensure the possibility to open them only with special tools.

- Options**
- Materials: Stainless Steel AISI 316L ("S") on request.
  - Size greater than 3".



Code	Dimensions (mm)			Weight (g)
	øA	Hex.	L	
PLG 38	3/8" NPT	8	16	20
PLG 1	1/2" NPT	10	18	40
PLG 2	3/4" NPT	10	22	60
PLG 3	1" NPT	12	22	110
PLG 4	1.1/4" NPT	12	22	130
PLG 5	1.1/2" NPT	12	22	160
PLG 6	2" NPT	12	22	210
PLG 7	2.1/2" NPT	14	29	360
PLG 8	3" NPT	14	29	560

Code	Dimensions (mm)				Weight (g)
	øA	øD	Hex.	L	
PLG 16	M16x1.5	22	10	20	30
PLG 20	M20x1.5	26	10	20	50
PLG 25	M25x1.5	31	10	20	70
PLG 32	M32x1.5	38	12	20	110
PLG 40	M40x1.5	50	12	23	170
PLG 50	M50x1.5	60	12	23	210
PLG 63	M63x1.5	73	12	23	280
PLG 75	M75x1.5	85	14	26	450
PLG 80	M80x1.5	90	14	26	510
PLG 85	M85x1.5	95	14	26	550
PLG 90	M90x1.5	100	14	26	580

- NOTES**
- Extended operating temperature range is -40°C ÷ +100°C with EPDM O-ring.
  - Extended operating temperature range is -60°C ÷ +180°C with Silicone O-ring.
  - The fitting may be mounted on electrical equipment suitable for group IM2 (firedamp mines) if it is not made of Aluminum light alloy. The resulting mode of protection will be: Ex d I Mb.

## Example: PLG25S

Order Coding	Type	Size and Threading	Material
	PLG	38/1/2/3/4/5/6/7/8 = NPT ANSI B1.20 16/20/25/32/40/50/63/75/80/85/90 = Metric ISO 262	B = Nickel plated Brass S = Stainless Steel AISI 316L