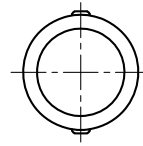
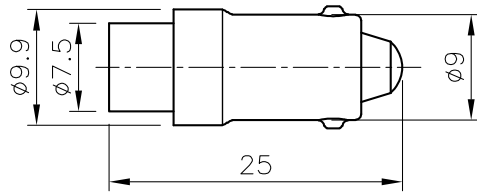
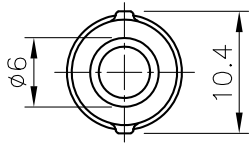


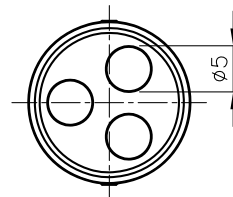
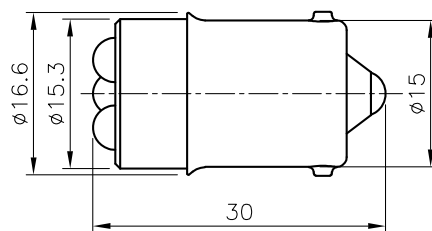
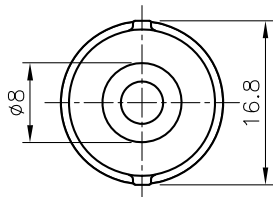
LED LAMP

series
RX - RS



C

Order Coding	LDB1R	LDB3R	LDB4R	LDB1G	LDB3G	LDB4G	LDB1A	LDB3A	LDB4A	LDB1V	LDB3V	LDB4V	LDB1B	LDB3B	LDB4B
Colour	RED			YELLOW			BLUE			GREEN			WHITE		
LED no.	1			1			1			1			1		
Single LED intensity (mcd)	102.1	44	102.1	92.5	25	95.2	98.6	28	98.6	95.2	132	95.2	103.1	149	103.1
Color Temp. (K)	1001			1330			>100000			7401			8468		
View angle (°)	98.2			107.2			104.2			101.0			99.5		
Wavelength (nm)	628.2÷640.0			595.0÷600.0			470.0÷472.7			525.0÷532.3			X:0.293-Y:0.292		
Luminance (Lm)	1.44	0.50	0.25	1.07	0.27	0.18	0.87	0.27	0.23	2.49	1.62	0.69	3.35	1.75	0.88
Voltage (AC/DC)	24	115	230	24	115	230	24	115	230	24	115	230	24	115	230
Current (mA)	15	5	3	15	5	3	15	5	3	15	5	3	15	5	3
Diss. Power (W)	0.4	0.6	0.6	0.4	0.6	0.6	0.4	0.6	0.6	0.4	0.6	0.6	0.4	0.6	0.6



Order Coding	LDB11R	LDB13R	LDB14R	LDB11G	LDB13G	LDB14G	LDB11A	LDB13A	LDB14A	LDB11V	LDB13V	LDB14V	LDB11B	LDB13B	LDB14B
Colour	RED			YELLOW			BLUE			GREEN			WHITE		
LED no.	3			3			3			3			3		
Single LED intensity (cd)	7.5	3.5	2.5	8.8	3.8	2.8	4.5	2.4	1.5	21.5	8.5	4.5	10.8	5.8	4.8
Color Temp. (K)	<1500			<1500			>25000			7500			8500		
View angle (°)	21			19			14			14			17		
Wavelength (nm)	630			595			470			525			X:0.29-Y:0.28		
Luminance (Lm)	5	2	1.5	5	2	1.5	2	1	0.5	10	4	2	12	6	3
Voltage (AC/DC)	24	115	230	24	115	230	24	115	230	24	115	230	24	115	230
Current (mA)	15	5	3	15	5	3	15	5	3	15	5	3	15	5	3
Diss. Power (W)	0.36	0.6	0.7	0.36	0.6	0.7	0.36	0.6	0.7	0.36	0.6	0.7	0.36	0.6	0.7