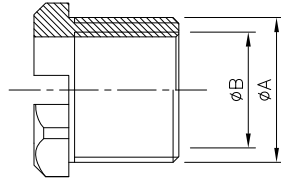
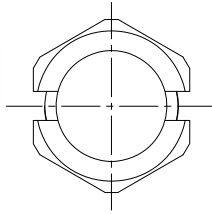


THREADING ADAPTOR series VD04

Material: Stainless Steel AISI 316L (S)

Required for the installation of draining valves on Ex e enclosures with reduced wall thickness.

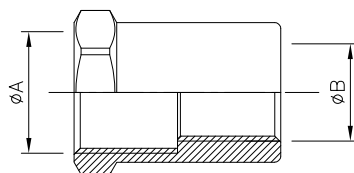
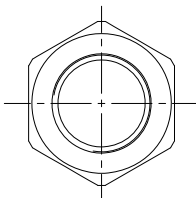


Order Coding	Dimensions	
	ØA	ØB
VD0416S	M20x1,5	M16x1,5
VD0420S	M25x1,5	M20x1,5
VD0438S	M20x1,5	3/8" NPT
VD041S	M25x1,5	1/2" NPT

FEMALE - FEMALE REDUCER series PF

Material: Stainless Steel AISI 316L (S)

Required for the installation of Bulkheads on enclosures with reduced diameter cable entries.



Order Coding	Dimensions	
	ØA	ØB
PF128S	M12x1,5	M8x1,25
PF1612S	M16x1,5	M12x1,5
PF2016S	M20x1,5	M16x1,5
PF2520S	M25x1,5	M20x1,5
PF12M18NS	M12x1,5	1/8" NPT
PF16M14NS	M16x1,5	1/4" NPT
PF20M38NS	M20x1,5	3/8" NPT
PF25M1NS	M25x1,5	1/2" NPT

LOCKNUTS series DL

Material: Stainless Steel AISI 316L (S)

Useful in order to avoid the loosening of valves and/or bulkheads and for the installation on Ex e enclosures with reduced wall thickness.



Order Coding	Dimensions
DL12S	M12x1,5
DL16S	M16x1,5
DL20S	M20x1,5
DL25S	M25x1,5

GASKETS series SW

Material: White Nylon (N)

Useful to ensure the IP degree of protection of enclosure on which valves and/or bulkheads are installed.



Order Coding	Dimensions
SW12N	M12x1,5
SW16N	M16x1,5
SW20N	M20x1,5
SW25N	M25x1,5